

# Pavement Management History – WA State and Local Agencies

2010 NWPMA Fall Conference  
Vancouver, Washington  
October 27, 2004





# Objectives – Discuss the following:

---

- How did Pavement Management Evolve in Washington State
- How did Local Agencies become involved?
- What is the Northwest Pavement Management Association (NWPMA) and its purpose?
- What are NWPMA's challenge for the future?
- Asset Management @ COV

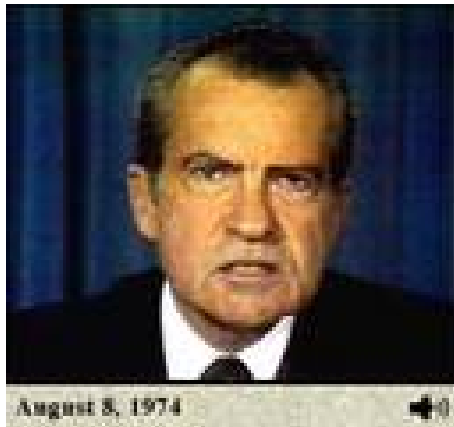
# Pavement Management at WSDOT – 1960's

- 1963 Priority Programming Act is Passed. Priority is given to the structural condition of the roadway.



# Pavement Management at WSDOT – 1970's

- 1970's Development of Condition Survey Process to Gather Data for Prioritizing Work.



# Pavement Management At WSDOT Early 1980's

- During the late 70's and Early 80's WSDOT developed a Pavement Management System for State Highways



## Development And Implementation Of Washington State's Pavement Management System

WA-RD 50.1

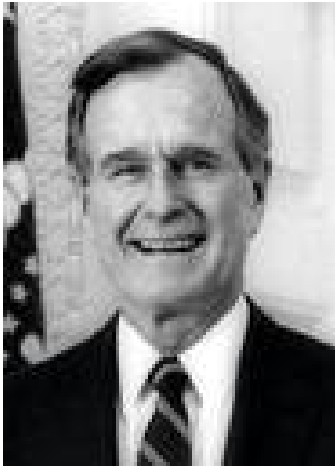
February 1983



Washington State Department of Transportation  
Public Transportation and Planning  
In Cooperation with  
United States Department of Transportation  
Federal Highway Administration

# Pavement Management At WSDOT 1990- Today

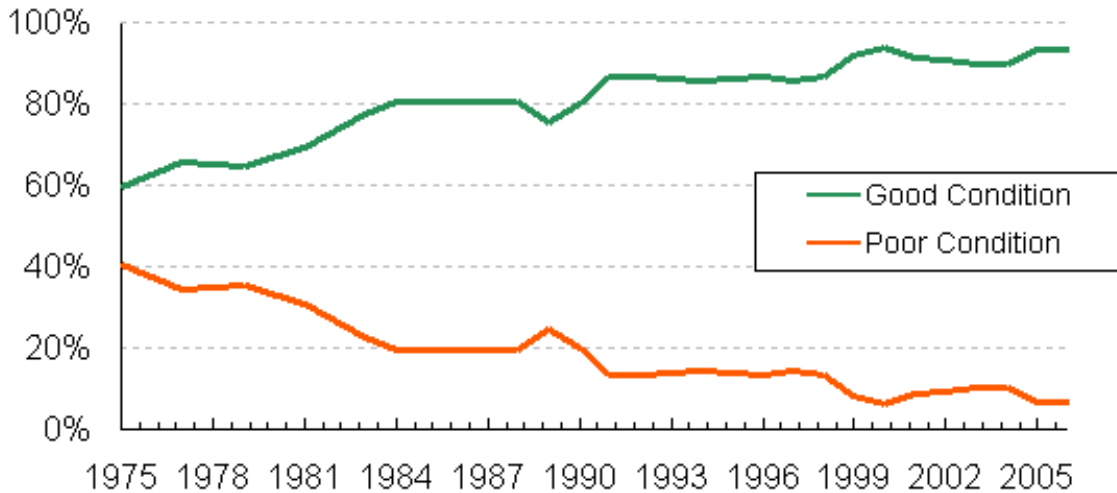
- Continued development of the WSDOT Pavement Management System has Produced Dividends.



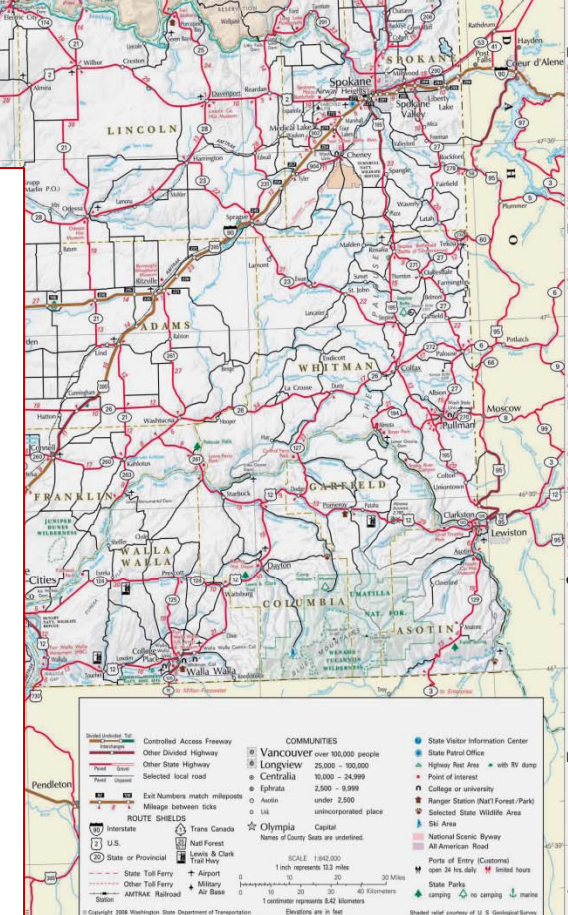
Typically for a given year

- 1.HMA overlays applied to 8.6% of HMA portion of route system.
- 2.BST seals applied to 13.7% of BST portion of route system.

State Highway Pavement Trends (1975-2007)



Data Source: WSDOT Materials Lab.





# Local Agencies 1980's -- Feasibility of WSPMS for Counties

---

- Local Agencies entered the picture in 1983-1984
- Investigated Feasibility of WSDOT PMS for Washington Counties

Feasibility Study of a  
Pavement Management System  
For Washington Counties

Final Report  
June 1984



Washington State Department of Transportation  
Planning, Research and Public Transportation Division



# Local Agencies -- Feasibility of WSPMS for Counties

---

- Report concluded:
  - WSPMS mainframe application had storage capacity for county info
  - Dial-up capability available for use of WSPMS from remote terminals
  - Trial Demonstration Recommended



# Local Agency Trial Demonstration – 1980's

---

- Documented the work to develop the Washington County Pavement Management System (WCPMS)
- Thurston and Benton Counties participated in the trial

**Pavement Management System:  
Demonstration for  
Washington Counties**

**WA-RD 79.1**

Final Report  
January 1988



Washington State Department of Transportation  
Planning, Research and Public Transportation Division  
In Cooperation With  
United States Department of Transportation

# Technology Innovation

## The Microcomputer

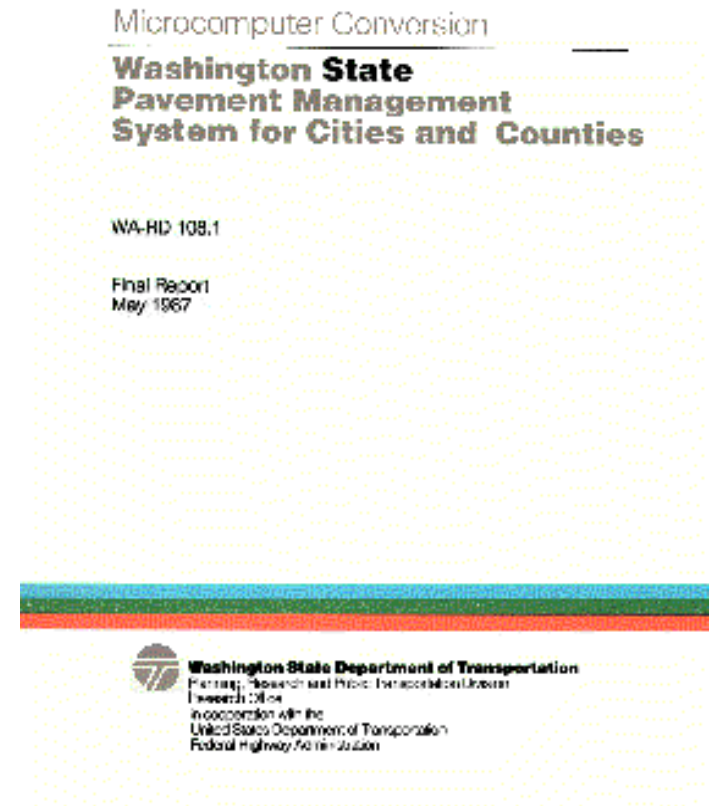
---

- Up to this time work was done on State Mainframe
- In late 1984 discussions began to convert the program to microcomputer and include city representatives. In March 1985 technical committee for this project met for the first time and included city and county representatives.



# Local Agency Involvement Microcomputer Conversion

- Report documenting this work developed in 1987
- Program called Washington State City and County Pavement Management System
- Mechanism for supporting local agencies needed.

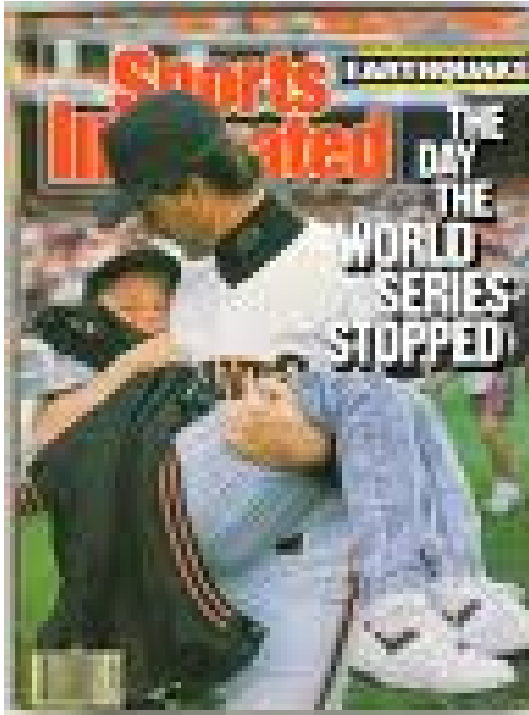


# Local Agency Support Need



- Many counties turned to CRAB for support
- Many cities left without support mechanism

October 17, 1989 5:04:15 p.m



# Local Agency Networking

- Several counties purchase Road Rater equipment to use for network level pavement management work
- First Road Rater Conference held in Vancouver Washington in October 25-26, 1989

ROAD RATER USER CONFERENCE  
Mark 105 Motor Inn  
Vancouver, Washington  
October 25-26, 1989

## PROGRAM

Wednesday, October 25

8:00-10:00	Registration
10:00-10:30	Welcome, Introductions
10:30-11:00	History of Nondestructive Road Testing and the Road Rater History and purpose of Road Testing - Herbert Southgate, University of Kentucky, Lexington, KY Birth and Development of the Road Rater - Bill Johnson, Foundation Mechanics, Inc., El Segundo, CA Charles Foster, Iowa Department of Transportation Dedy Schuurman, Federal Highway Administration, Vancouver
12:00 Noon	Lunches
1:30-3:00	Applications of Road Rater Technology State Department of Transportation Programs Charles Parker, Iowa DOT James Hawkins, New Mexico DOT Jim Stevenson, Montana DOT County Programs Irene Shepard, Clark County Steve Kelley, Spokane County County Aerial Preservation Program Profe Gscholar, CMAS Mural Aerial Program Eric Berger, CMAS
3:00	Break
3:15-5:00	Applications of Road Rater Technology TSS Applications Ken Wipple, ITRC Wald Mueller, CMAS Computer Programs for Road Rater Bill Johnson, Foundation Mechanics, Inc. Ray McQueen, McQueen & Assoc., Oakton, VA

Thursday, October 26

8:00-12:00	Road Rater Calibration Tests (Meet in Hotel Parking Lot) Actual Road Rater Testing - Spot Checks Machine Run Comparisons Test Section Run
------------	---

# Local Agency Support NW Pavement Mgt Users Group



## Monthly Newsletter

*"Cities & Counties Working  
Together  
for Better Pavement"*

Chairman - Bill Whitcomb  
Secretary - Samuel Obunike

Vol. 2 No. 13

August/September

- In the late 1980's a number of cities form the Northwest Pavement Management Users Group
- The group meets monthly and begins to attract county participation.



# Continued Evolution of Pavement Management Networking

---

- Both groups expand the scope of their topics
- Both groups include similar participation
- “Road Raters” look at formalizing their organization
- Committee formed to determine the future of the “Road Rater” Group
- Membership expanded to include representatives to look at developing one Pavement Management group in Washington.
- Developing a combined organization is voted on by membership of the Road Rater group and the Northwest Pavement Management User Group.



# The NWPMA is formed

---





# What is the NWPMA?

---

... a non-profit association of professional and technical agencies and persons, both public and private with interests and responsibilities in the systematic preservation and restoration of public road and street pavements.



# NWPMA's Purpose

---

- Promote effective partnerships
- Improve members ability to effectively manage their pavements
- Promote pavement management technology transfer, research, and education
- Provide common forum for exchange of ideas





# NWPMA Technical Activities

---

- Condition Survey Manuals
- Technical Assistance to the Technical Transfer Centers
- Activities of Technical Committees

# NWPMA Networking Activities

- Fall and Spring Conferences
- Pre-Conference Workshops
- Technical Sessions
- Vendor Participation





# NWPMA Challenges

---

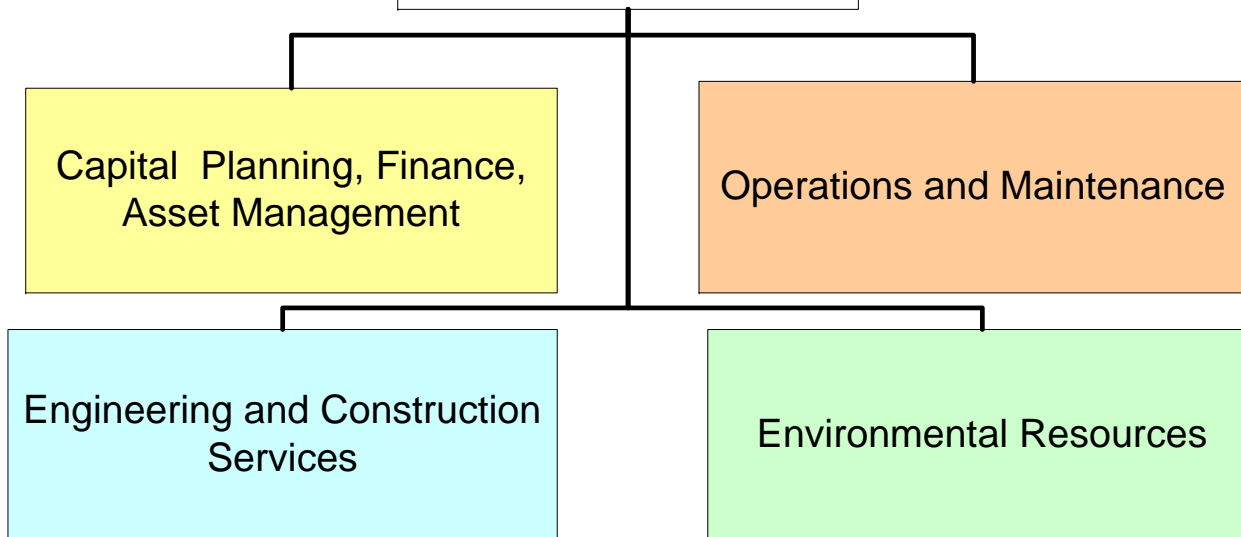
- Maintaining Partnerships
- Staying True to its Purpose
- Generating Enthusiasm
- Providing Opportunities for Furthering Pavement Management
- Training
- Networking

# Asset Management @ COV

Transportation  
H2O Production  
H2O Distribution

*Public Works  
Director*

Sewer Collection  
Wastewater Treatment  
Surface Water





# Thank You

---

Bill Whitcomb

City of Vancouver

PO Box 1995

Vancouver WA 98668-1995

360.487-7702

[bill.whitcomb@cityofvancouver.us](mailto:bill.whitcomb@cityofvancouver.us)