

GIS Mapping for Pavement Management

Dan Kaler
GIS Coordinator



GIS Data

- Line Features (aka "Routes")
 - Route ID – CRIS route number
 - Route Extents – BMP & EMP values
- Table Attributes (aka "Events")
 - Point Locations
 - Line Segments

Dynamic Segmentation

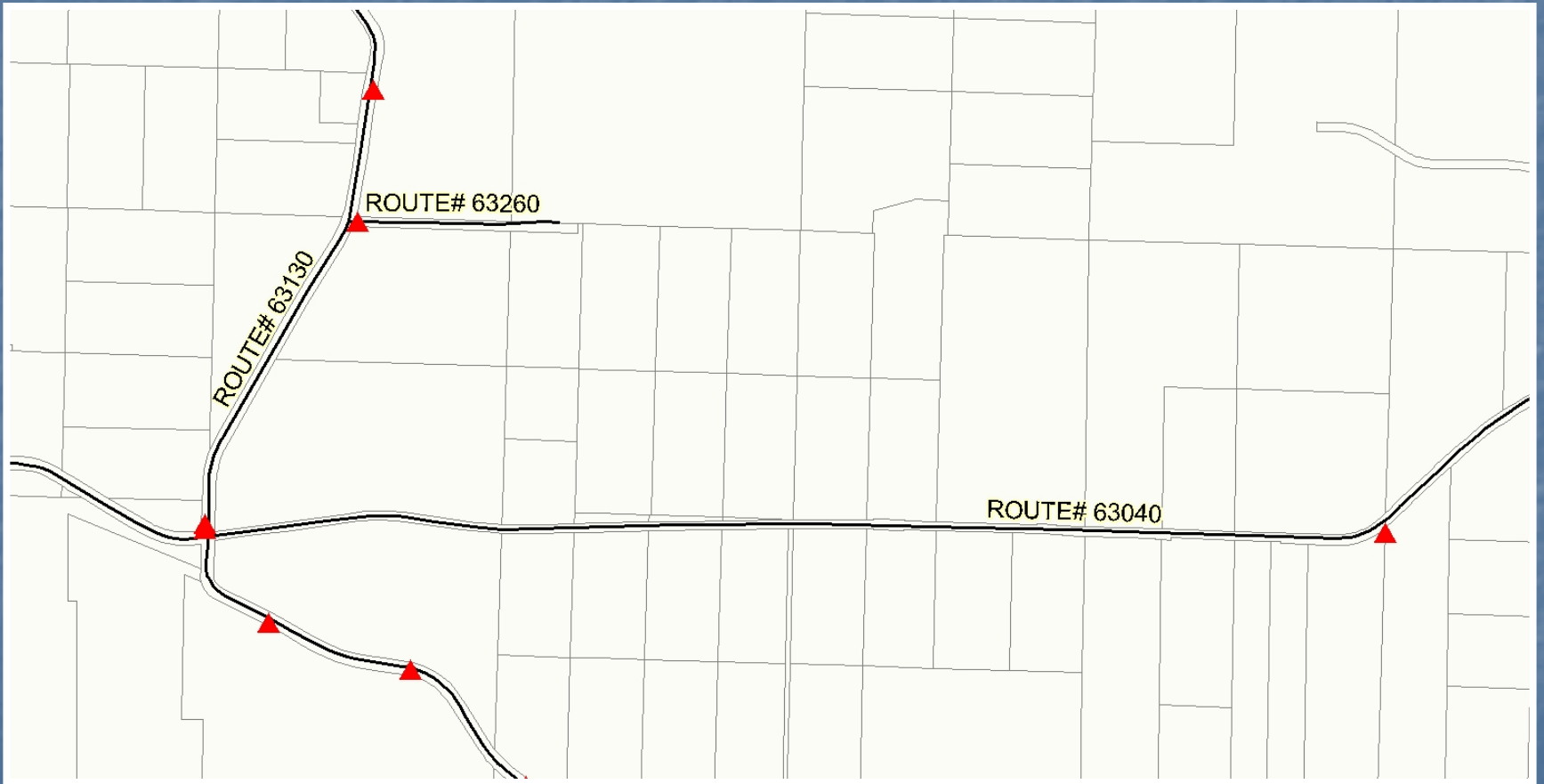
- Allows attributes to be associated with a specified portion of a linear feature.
- The results of the dynamic segmentation process are known as a route events.
- Route events can be represented as either points (culverts) or lines (overlays).

Point Event Table

| | RD_LOG | NAME | FROM_TO | MP | TYPE | SIZE |
|--|--------|--------------------|---------------------------------|-------|------|------|
| | 61230 | NE Moe Rd | NE 399th Street S to End | 0.073 | conc | 12" |
| | 61630 | NE Gristmill Rd | NE Cedar Cr Rd to Spurrel Rd | 0.286 | cmp | 12" |
| | 61710 | NE Buncombe Hollow | NE Grinnel/Etna Rd to end | 0.12 | ads | 24" |
| | 63360 | NE Yacolt Mt. Rd | NE Kelly Hill to MP .140 West | 0.084 | cmp | 12" |
| | 63600 | NE Jehnsen Rd | NE Worthington Rd to End | 0.297 | cmp | 18" |
| | 63630 | NE 241st Ave | NE Worthington Rd to End | 0.05 | conc | 8" |
| | 63670 | NE 226th Ave | NE Worthington Rd to End | 0.095 | cmp | 12" |
| | 63970 | NE 206th Ave | NE 419th Street to .240mi N of | 0 | conc | 12" |
| | 64330 | NE 256th Ave | SR-503 South to end | 0.066 | ads | 12" |
| | 64520 | NE Hanley Currie R | From SR-503 West to End | 0.205 | conc | 8" |
| | 64650 | NE Gerber Rd | NE Amboy Rd to End | 0.092 | cmp | 12" |
| | 41190 | NW 31st Ave | NW Hillhurst Rd to NW 319th Str | 0.438 | conc | 10ft |

Record: Show: Records (0 out of 3434)

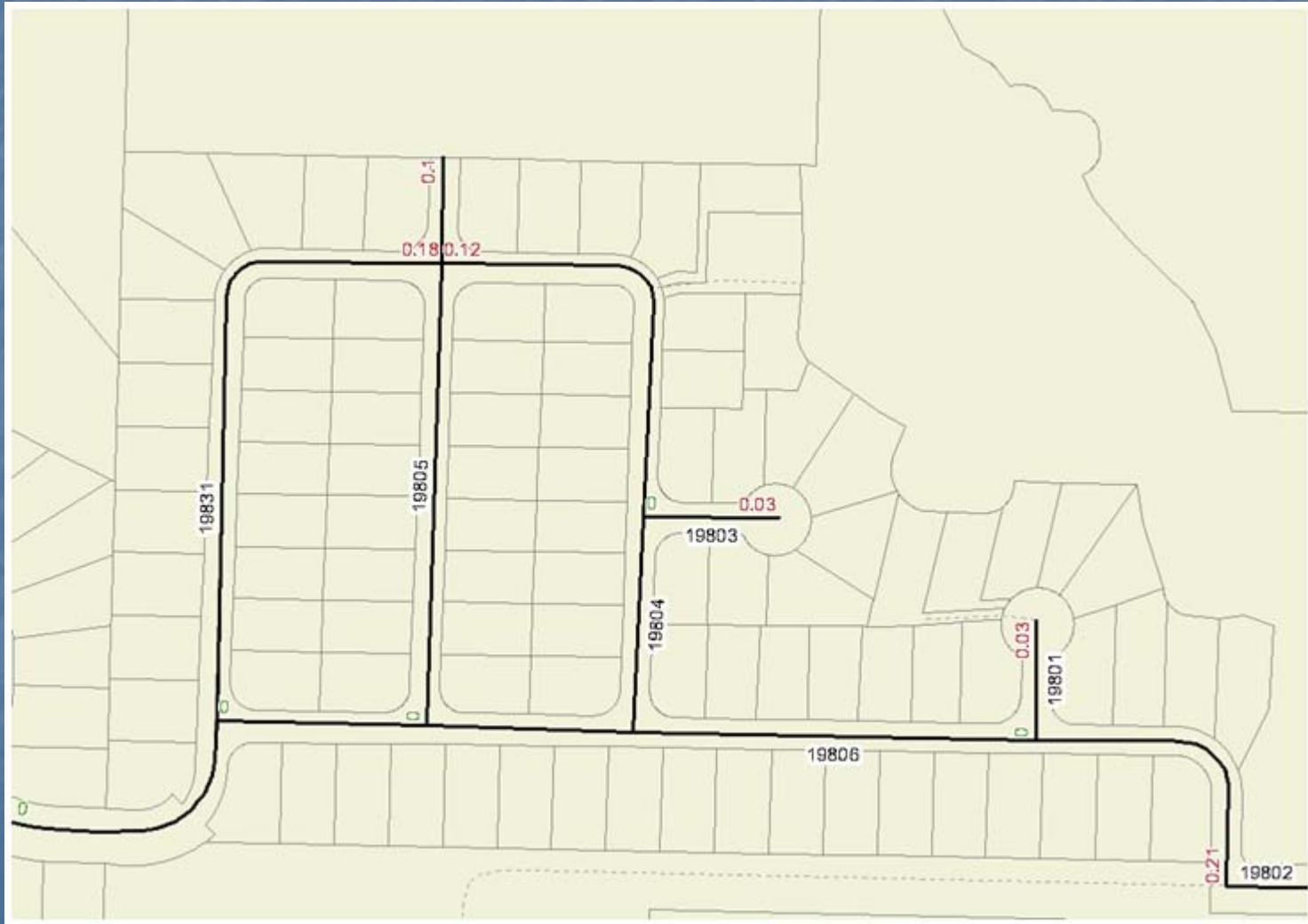
Points Events



Linear Event Table

| Project | Route | Street | From loc | To loc | BMP | EMP |
|---------|-------|--------------------------|---------------------------|-------------------------|------|------|
| 1 | 13190 | NW 9 Av | NW 78 St | NW 99 St | 0.00 | 0.98 |
| 2 | 14460 | NW 119 St | NW 36 Av | NW 26 Av | 0.00 | 0.50 |
| 3a | 22135 | NE 72 Av | Vancouver City Limits | NE 62 St | 0.68 | 1.11 |
| 3b | 22135 | NE 72 Av | NE 65 St | NE 78 St | 1.28 | 1.94 |
| 4 | 34350 | SE Gibson Rd | SE 382 Av | Skamania Co | 1.48 | 3.58 |
| 5a | 40360 | NW 199 St | West side of NW Delfel Rd | NW 41 Av | 0.07 | 2.18 |
| 5b | 43680 | NE 199 St | NE 10 Av | East side of I-5 bridge | 3.00 | 3.24 |
| 6 | 43110 | NE 20 Av/Union Rd | NE 17th Av | NE Union Rd/15 Av | 0.30 | 1.64 |
| 7 | 91300 | NE 78 St/76 St | NE Andresen Rd | NE 94 Av | 7.06 | 8.35 |

Linear Route Events



Mobility Data

Mobility File View PMS MMS Reports Tools Admin Help

Name Number Asc Desc Filter On Filter Off

Road Segment

Reference Information

Road Number: 19806 Road Name: NE 104TH WY

From Milepost: 0.000 From: at NE 104TH ST

To Milepost: 0.210 To: at NE 104TH ST

Classification Cross Section Structure Traffic Needs Analysis Districts / Routes Area Misc GIS

Federal Function Class: 19 Urban Local Access

Local Function Class:

Jurisdiction: 5 County

Jurisdiction Detail:

Primitive Road: Not a primitive road

National Hwy System:

Truck Route

Class: Non Truck Route

Route: Season:

Federal Route:

HPMS Segment:

In Urban Growth: Yes City #:

Urban Area: 03 - Vancouver/Camas/Battleground

Build to Urban Standards:

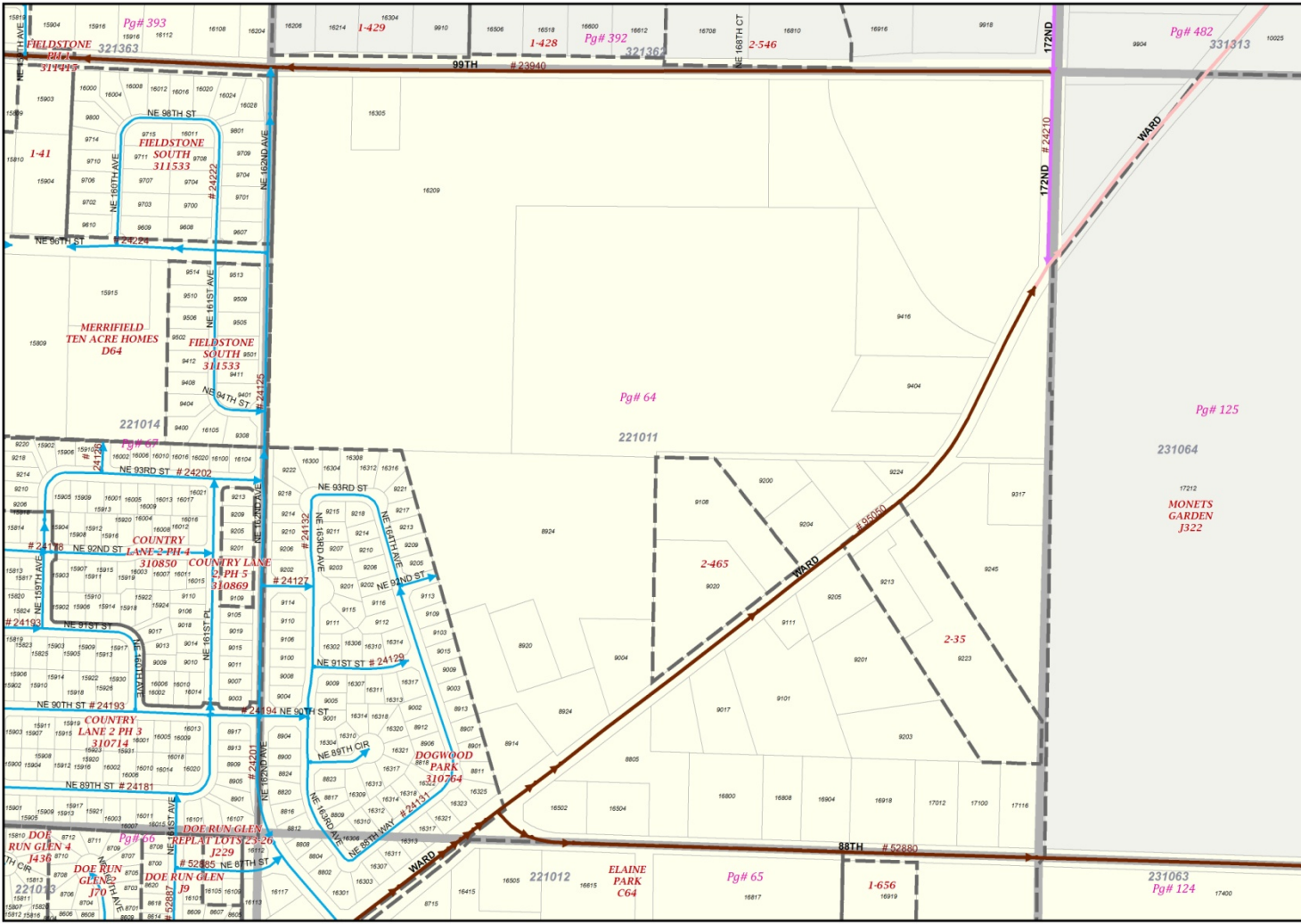
MPD / RTPD:

Select Features

- Roadlog
- Reference Points
- Signs
- Guardrails
- Culverts
- Striping
- Traffic Study
- Crashes
- CLAS
- Street Lighting
- Storm Systems
- Approaches
- Bridges
- Right of Way Widths
- Right of Way Documents
- Projects
- Planned Projects
- Surface Condition
- Surface History
- Structural Condition

Close Print Clone Delete Save

Road Inspection Map Book





Department of Assessment and GIS

CAUTION: This product was prepared by Clark County Department of Assessment and GIS. Every effort has been made to ensure the accuracy of this document. Clark County expressly disclaims any liability for inaccuracies which may be present.

LEGEND

- 5214 Route Number
- Road Routes
 - Rural Major Collector (7)
 - Rural Minor Collector (8)
 - Rural Local Access (9)
 - Urban Principal Arterial (14)
 - Urban Minor Arterial (16)
 - Urban Local Access (19)
 - Urban Collector (17)
- Subdiv
- Inspection Boundary
- Water Bodies
- Taxlots
- Quarter Section
- Incorporated
- Urban Growth Area
- Unincorporated

Road Inspection

East Zone

Volume 1

Clark County Quarter Section Locator 221011

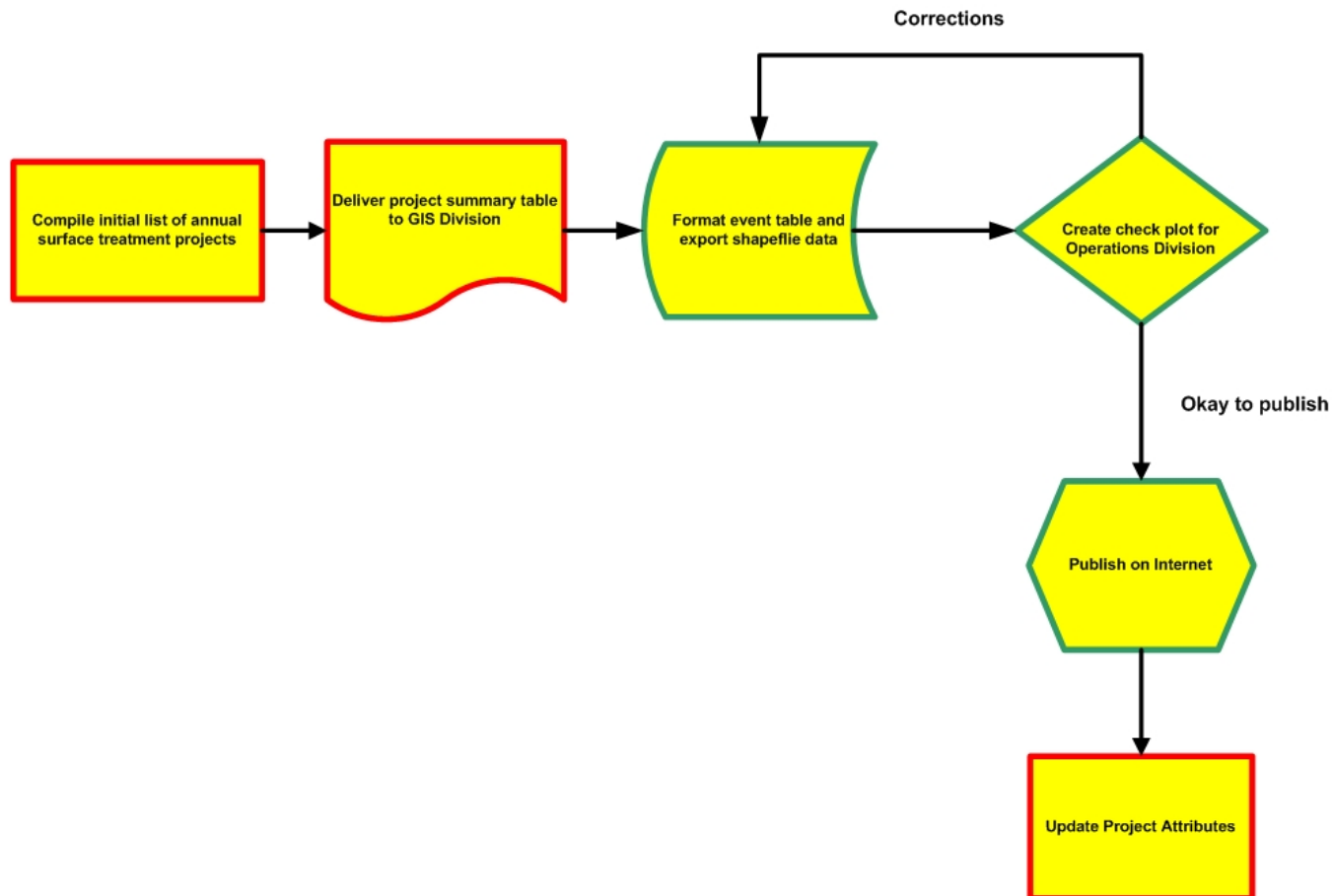


Scale = 1:3,000

Page No **64**

Creation of GIS Layer

Work Flow for Surface Treatment Projects



Surface Treatment Table

| Attributes of transportation.GIS_SDE.SurfTrtmnts | | | | | | | |
|--|------|-------|------------------------------------|-------------------------|------|--------------------|--|
| RT_ID | BMP | EMP | LOCATION | ROADNAME | YEAR | TREATYPE | |
| 91300 | 4.16 | 5.93 | Hwy 99 to St Johns Rd | NE 78 St | 2008 | HOT MIX OVERLAY | |
| 34350 | 1.48 | 3.58 | SE 382 Av to Skamania Co line | SE Gibson Rd | 2008 | HOT MIX OVERLAY | |
| 23040 | 0 | 0.38 | NE 94 Av to NE 87 Av | NE 95 St | 2008 | HOT MIX OVERLAY | |
| 62900 | 0 | 2 | NE 119 Av to SR-503 | NE 359/365 St | 2008 | HOT MIX OVERLAY | |
| 50900 | 0 | 2.48 | NE 112 Av TO NE 72 Av | NE 199 St | 2007 | HOT MIX OVERLAY | |
| 50900 | 0 | 0.5 | SR-503 TO NE 112 Av | NE 199 St | 2007 | HOT MIX OVERLAY | |
| 62350 | 0.21 | 4.04 | NE 94 Av TO NE Lockwood Crk Rd | NE 379 St/Taylor Valley | 2007 | CHIP SEAL | |
| 96160 | 11 | 13.03 | Munch Rd TO 0.46 mi E Cedar Mist R | NE Cedar Cr Rd | 2007 | BASE STABILIZATION | |
| 62760 | 0 | 0.76 | NE Gable Av TO NE 94 Av | NE 359 St | 2007 | BASE STABILIZATION | |
| 62600 | 0 | 1.11 | NE 102 Av TO NE 122 Av | NE 314 St/122 Av | 2007 | CHIP SEAL | |
| 62550 | 1.9 | 2.8 | NE 299 St TO NE 314 St | NE 112 Av/Harrison Rd | 2007 | CHIP SEAL | |
| 53440 | 0 | 0.5 | NE 207 Av TO NE 217 Av | NE 169 St | 2007 | COLD MIX OVERLAY | |
| 94100 | 2.08 | 4.35 | NE 72 AV TO SR-503 | NE 119 ST | 2007 | CHIP SEAL | |
| 51940 | 2.1 | 3.48 | NE 182 Av TO NE 209 Av | NE 219 St | 2007 | CHIP SEAL | |
| 44390 | 0 | 3 | NE 259 St TO NE 199 St | NE 50 AV | 2007 | CHIP SEAL | |
| 62760 | 0 | 0.76 | NE Gable Rd TO NE 94 Av | NE 359 St | 2007 | CHIP SEAL | |
| 51730 | 0 | 0.75 | NE 182 Av TO NE 199 St | NE 209 St / 176 Av | 2007 | CHIP SEAL | |
| 43650 | 0 | 0.12 | NE 194th ST TO South to End | NE 17th AV | 2007 | CHIP SEAL | |
| 63130 | 0 | 2.27 | NE Cedar Crk Rd TO NE 399 St | NE Munch Rd | 2007 | CHIP SEAL | |

Record: 0 Show: All Selected Records (0 out of 2724 Selected) Options

Utility Permit Tracker

Clark County Utility Permits - Microsoft Internet Explorer provided by Clark County

File Edit View Favorites Tools Help

http://nt04/imf52/inf.jsp?site=utilperm_ed Live Search

Clark County Utility Permits

CLARK COUNTY Washington Clark County Utility Permits Maps Online

Layers Legend Key Map Editing Bookmarks Create PDF

Map Layers

- Utility Permits
 - Utility Permits
 - Utility Permits (unmatched)
 - Historic Permits
 - Surface Overlays (last 5 yrs)
 - CAPE SEAL
 - CHIP SEAL
 - COLD MIX OVERLAY
 - HOT MIX OVERLAY
 - SLURRY SEAL
 - BASE STABILIZATION
 - MICRO SEAL
- Base Layers
 - 2007 Photography
 - Cities
 - Sections
 - Roads
 - Taxlots
 - Water
 - Atlas Pages

Automatically Refresh Map Show Legends

Map center: 45° 44' 14.0" N, 122° 31' 0.3" W

Scale: 1:2,149 Quick View: Select a location Map Tool: Zoom In Active Layer: Surface Overlays (last 5 yrs) powered by GOCOCORTEX

Local intranet 100%

Next Steps

- Data Maintenance

- Keep historical routes (preserve location data)
- Create new routes (annual road log report)
- Update route events (project status)

- Data Integration

- Linkage to other software (Mobility, etc.)
- Enable field access (mobile applications)